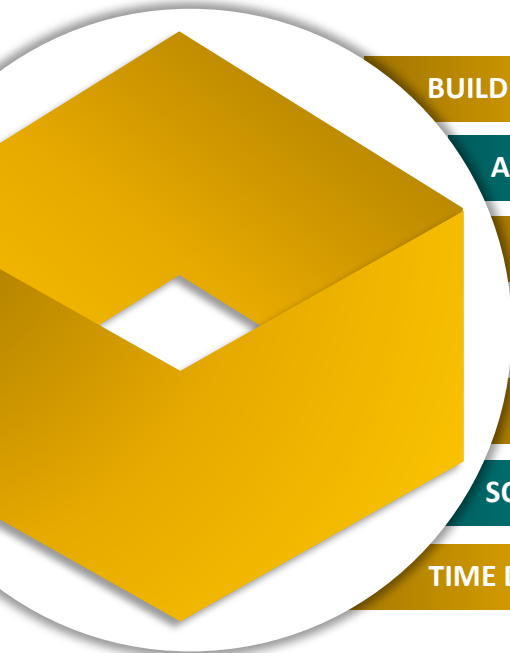
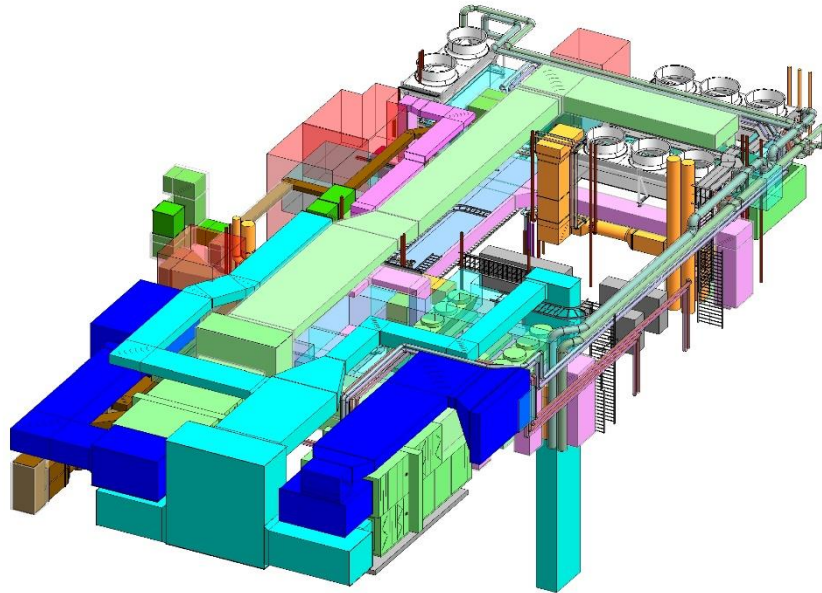


BRAHAM | UK



BUILDING TYPE | Commercial

AREA | Total BUA 12,93,228 Sq. Ft

TRADE | MEPF

LOD | 300

TEAM SIZE | 8

SOFTWARE | Revit, Navis Works

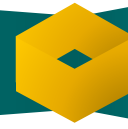
TIME DURATION | 3 Months

BIM SCOPE OF WORK FOR VIRTUAL BUILDING STUDIO

3D BIM Model | Clash Detection and Coordination

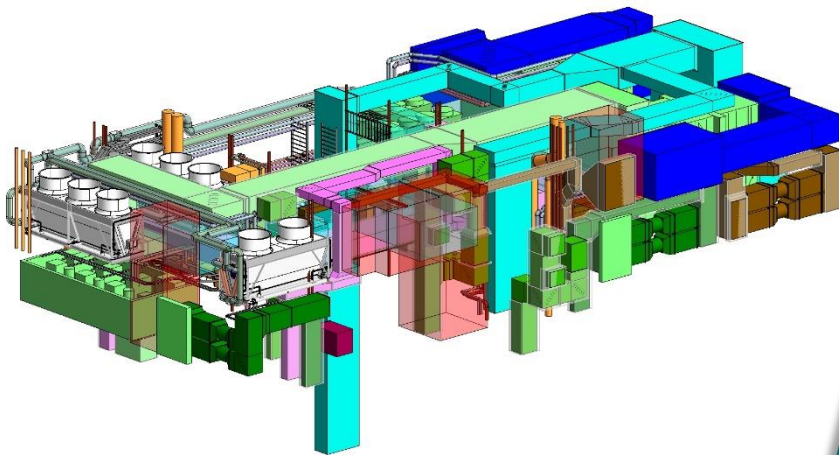
PROJECT OVERVIEW

Beagle house is located at Braham street London, G+18 story commercial building is owned by Mayor of London, Greater London Authority.



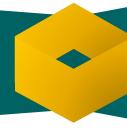
INPUT DATA

CAD Data | PDF Site Plan



OUTPUT DATA

MEPF Model



PROJECT SUMMARY

The task was to create LOD 300 BIM Model for MEPF services and Design Validation prior to construction.

CHALLENGES & SOLUTIONS

This project had Several Coordination Issues and Lots of Revision on drawings. VBS managed the whole project smoothly by using internal Standard Operating Procedure, Maintaining RFI s in a log, thereby helped client with possible solution of the issues.

CLIENT'S RATINGS



TESTIMONIAL



I know you guys tried very hard to solve our issues. Your team know this work. You guys should count the revision work in your quote only.



ABOUT US

Virtual Building Studio was setup with the objective of providing comprehensive end-to-end customized services & solutions to AEC industry globally. Virtual Building Studio has emerged as a leader in providing BIM services & solutions to some of USA, UK, Singapore, Australia, Canada's top design firms & construction companies.