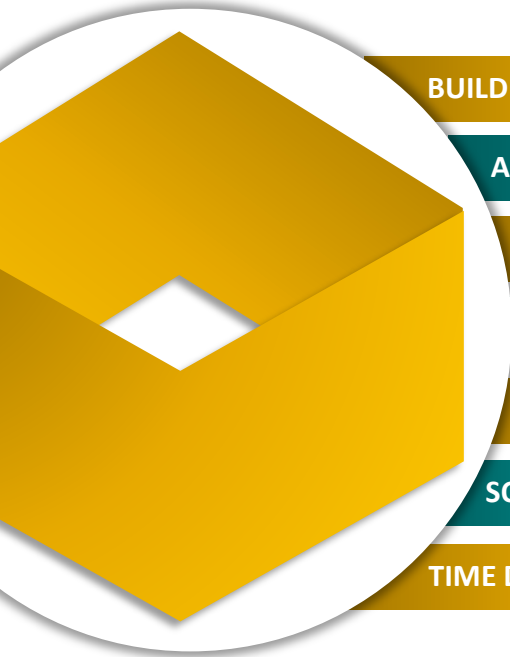
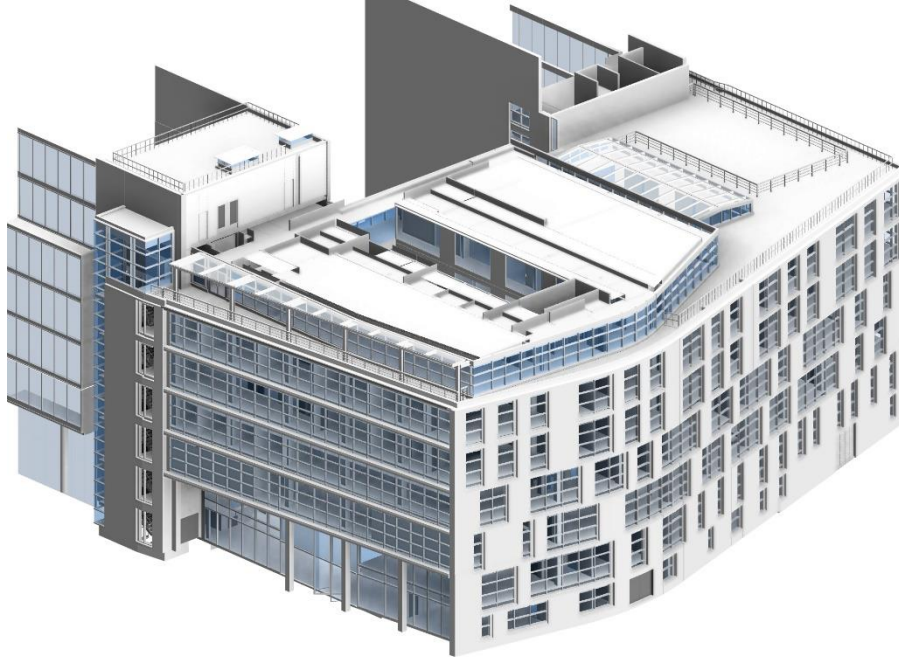


## CASS BUILDING, LONDON SCHOOL OF ECONOMICS | UK



**BUILDING TYPE** | Institutional

**AREA** | Total BUA 1,52,856 Sq. Ft

**TRADE** | Architecture, Structure

**LOD** | 300

**TEAM SIZE** | 4

**SOFTWARE** | Revit

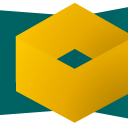
**TIME DURATION** | 2 Months

### BIM SCOPE OF WORK FOR VIRTUAL BUILDING STUDIO

*Scan to BIM*

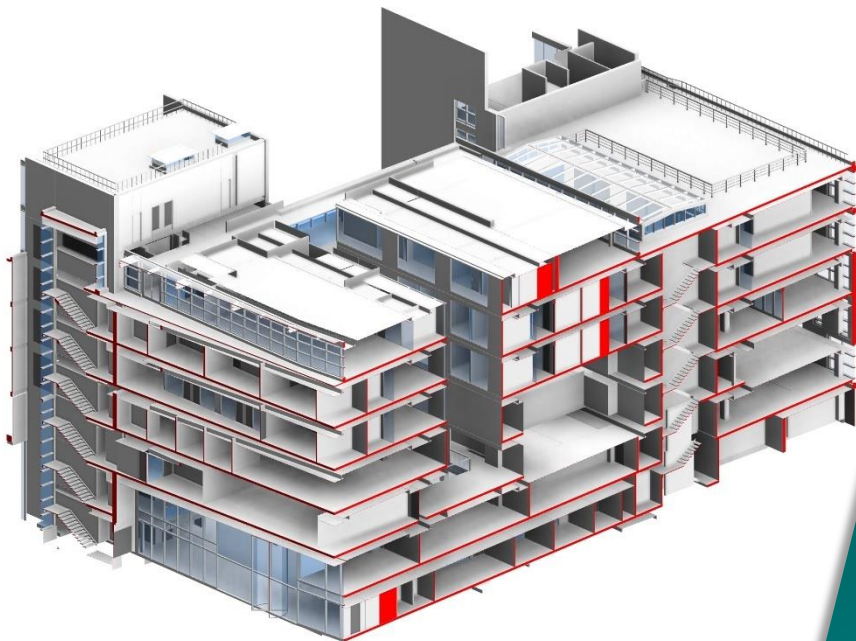
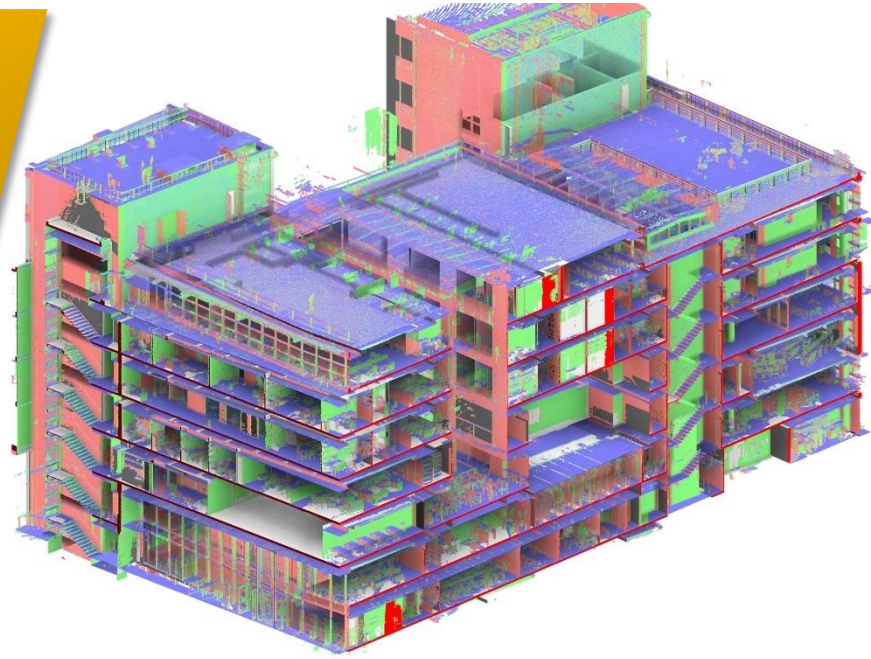
### PROJECT OVERVIEW

*Cass Business School is among the global elite. The campus is in university of London city urban area.*



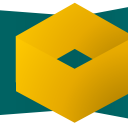
## INPUT DATA

Point Cloud Data



## OUTPUT DATA

Architecture | Structure  
Model



## PROJECT SUMMARY

The task was to create LOD300 BIM Model of Architecture & Structure before starting refurbishment as per Architect's plan. The purpose of Point cloud to BIM modeling was to get Up-to-date Architectural & structural information.

## CHALLENGES & SOLUTIONS

Main challenge was to deliver the project in two months of time frame Volume of scan data was very high Scans were not accurately done in some areas.

Our team worked dedicatedly to match the delivery timeline. We had to take calculated assumption in the areas where scans were inaccurate.

## CLIENT'S RATINGS



## TESTIMONIAL



I thank your team for delivering the project on time. You made my life easy for this project. Cheers!



## ABOUT US

Virtual Building Studio was setup with the objective of providing comprehensive end-to-end customized services & solutions to AEC industry globally. Virtual Building Studio has emerged as a leader in providing BIM services & solutions to some of USA, UK, Singapore, Australia, Canada's top design firms & construction companies.